



# United Scientific

## Metalware 2020





# Metalware Clamps



## 3-Prong Heavy Duty Extension Clamp with Stainless Steel Rod

This extension clamp features heavy-duty electroplated zinc alloy construction and dual prong adjustments. The 5" long extension rod is constructed of stainless steel. Prongs open to about 4", have a recommended maximum grip size of about 3.25", and feature double keyed spring-type adjustment screws. Prongs are covered with non-slip PVC sleeves. Overall length is 10.75".

Item No.	Description	Maximum Use Temperature
CLHD03	3-Prong Heavy Duty Extension Clamp	80°C

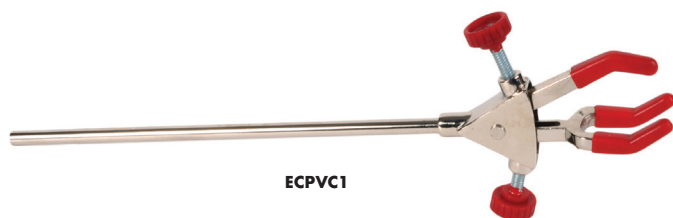


ECSIL2

## 3-Prong Extension Clamps with Boss Head

Our deluxe line of 3-prong extension clamps are constructed of pressure die-cast zinc alloy and are chrome-plated. Prongs open to about 3", have a recommended maximum grip size of about 2.25", and feature double keyed spring-type adjustment screws. Boss head clamp can swing freely, is lockable at any angle up to 360°, and can be used with rods up to 19mm.

Item No.	Description	Maximum Use Temperature
ECPVC2	3-Prong Extension Clamp with Boss Head, PVC coated grips	80°C
ECSIL2	3-Prong Extension Clamp with Boss Head, Silicone coated grips	280°C



ECPVC1



ECSIL1

## 3-Prong Extension Clamps with Rod

Our deluxe line of 3-prong extension clamps are constructed of pressure die-cast zinc alloy and are chrome-plated. Prongs open to about 3", have a recommended maximum grip size of about 2.25", and feature double keyed spring-type adjustment screws. Extension rod is 8.25" long, 5/16" O.D., with an overall length of 12.75".

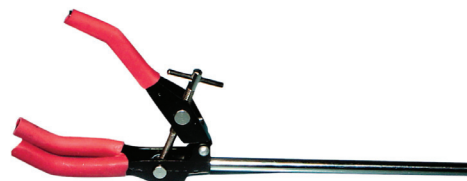
Item No.	Description	Maximum Use Temperature
ECPVC1	3-Prong Extension Clamp with Rod, PVC coated grips	80°C
ECSIL1	3-Prong Extension Clamp with Rod, Silicone coated grips	280°C



## 3-Prong Universal Clamp with Holder

Clamp features vinyl coated 3-prong jaws that open up to 2.25" wide. Includes fiberglass sleeves and a clamp holder that can be rotated 360°.

Item No.	Description	Maximum Use Temperature
ECBH01	3-Prong Universal Clamp with Clamp Holder	80°C



## 3-Prong Extension Clamp with Steel Rod

Features a 3-prong die-cast clamp attached to a chrome-plated steel rod. Prongs are covered with rubber sleeves. Overall length is 10".

Item No.	Description	Maximum Use Temperature
ECLJ03	3-Prong Extension Clamp with Steel Rod	60°C



## 2-Prong Burette Clamps with Extension Rod

Our deluxe line of 2-prong burette clamps are made of pressure die-cast zinc alloy and are chrome plated. Adjustable to hold up to 60mm O.D. burettes, these clamps feature a spring-type adjustment key. Extension rod is 8.25" long, 5/16" O.D., with an overall length of 12.75".

Item No.	Description	Maximum Use Temperature
CLCORK1	2-Prong Burette Clamp with Extension Rod, Cork coated grips	60°C
CLPVC1	2-Prong Burette Clamp with Extension Rod, PVC coated grips	80°C
CLSIL1	2-Prong Burette Clamp with Extension Rod, Silicone coated grips	280°C



## 2-Prong Burette Clamps with Boss Head

Our deluxe line of 2-prong burette clamps are made of pressure die-cast zinc alloy and are chrome plated. Adjustable to hold up to 60mm O.D. burettes, these clamps feature a spring-type adjustment key. Boss head clamp can swing freely and is lockable at any angle up to 360°, and can be used with rods up to 19mm.

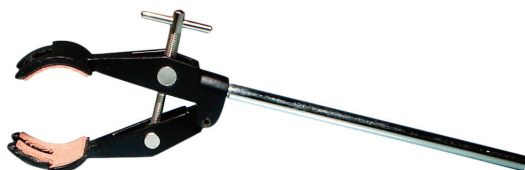
Item No.	Description	Maximum Use Temperature
CLCORK2	2-Prong Burette Clamp with Boss Head, Cork coated grips	60°C
CLPVC2	2-Prong Burette Clamp, with Boss Head, PVC coated grips	80°C
CLSIL2	2-Prong Burette Clamp, with Boss Head, Silicone coated grips	280°C



## 2-Prong Extension Clamp with Steel Rod

Features a 2-prong die-cast clamp attached to a chrome-plated steel rod. Jaws are lined with cork. Overall length is 8".

Item No.	Description	Maximum Use Temperature
CLEX01	2-Prong Extension Clamp with Steel Rod	60°C





# Metalware Clamps



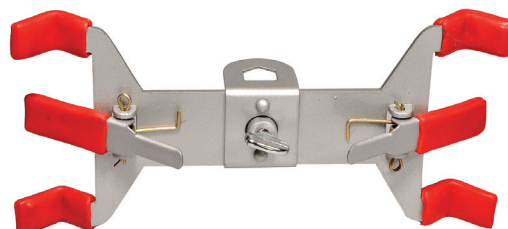
CLBURDS



CLBURDD



CLBUR1N



CLBUR2N

## Deluxe Burette Clamps

Deluxe burette clamps are die-cast from aluminum and feature black rubber sleeves for firm gripping of burettes. The adjustable clamps hold up to 30mm O.D. burettes which are held in place by the pressure created by the springs. For use with rods up to 19mm diameter.

Item No.	Description
CLBURDS	Deluxe Burette Clamp, Single
CLBURDD	Deluxe Burette Clamp, Double

## Burette Clamps

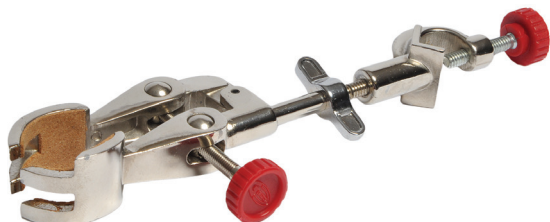
These clamps are constructed from aluminum and feature PVC covered spring jaws. Available in single and double versions, these clamps accept burettes up to 35mm O.D., and can be used with support rods up to 1/2" O.D.

Item No.	Description
CLBUR1N	Burette Clamp, Single
CLBUR2N	Burette Clamp, Double

## Lincoln-Type Burette Clamp

This zinc-plated stamped steel burette clamp has a steel thumbscrew and can be used with rods up to 3/4" in diameter. The distance between the two burettes is 7-1/4" (18.4cm).

Item No.	Description
CLLB02	Lincoln-Type Burette Clamp



## 4-Prong Extension Clamp with Boss Head

Features a 4-prong die-cast clamp attached to a chrome-plated steel rod. Jaws are lined with cork. Overall length is 8".

Item No.	Description	Maximum Use Temperature
CLFCORK2	4-Prong Extension Clamp with Boss Head	60°C





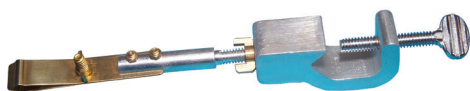
# Metalware Clamps



## Clamp with Hook

Clamp with Hook can be rotated and locked in any position. Ideal for supporting suspended thermometers, drying tubes, etc. The clamp attaches to rods up to 13mm ( $\frac{1}{2}$ " O.D.

Item No.	Description
CLHK01	Clamp With Hook



## Thermometer Clamp

Thermometer Clamp features an adjustable 360° rotating jaw for suspending thermometers. The clamp attaches to rods up to 13mm ( $\frac{1}{2}$ " O.D.

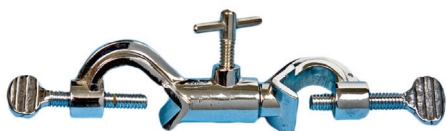
Item No.	Description
THCL01	Thermometer Clamp



## Clamp Holder, Cast Aluminum

For rods to 19mm in diameter. Cast aluminum body with steel thumb screws.

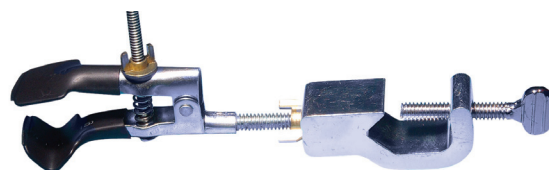
Item No.	Description
RCLBH1	Clamp Holder, Cast Aluminum, Steel Thumb Screws



## Swivel Clamp Holder

Plated steel double clamp. Accepts rods up to  $\frac{3}{4}$ " diameter (19 mm). One clamp can be rotated 360° along its axis and locked in any position. Length across clamps is 4.5".

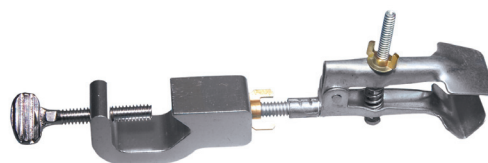
Item No.	Description
CLMS01	Swivel Clamp Holder



## Burette Clamp with Boss Head, Coated Jaws

Excellent for holding small objects. The jaws open from 15mm to 45mm ( $\frac{1}{2}$ " to  $1\frac{3}{4}$ "). The clamp attaches to rods up to 13mm ( $\frac{1}{2}$ " O.D. Jaws can be rotated and locked at any angle. Jaws are covered with PVC sleeves.

Item No.	Description
COBR3-FR	Burette Clamp with Boss Head, Coated Jaws



## Burette Clamp with Boss Head, Uncoated Jaws

Excellent for holding small objects. The jaws open from 15mm to 45mm ( $\frac{1}{2}$ " to  $1\frac{3}{4}$ "). The clamp attaches to rods up to 13mm ( $\frac{1}{2}$ " O.D. Jaws can be rotated and locked at any angle.

Item No.	Description
COBR3-U	Burette Clamp with Boss Head, Uncoated Jaws



## Clamp Holder, Brass

For rods up to 19mm in diameter. Brass body with brass thumb screws.

Item No.	Description
RCLBH2	Clamp Holder, Brass Body, Brass Thumb Screws



NEW PRODUCT

## Clamp Holder, Right Angle

Cast aluminum clamp holder for use with rods up to 19mm in diameter. For use when clamping at 90° is required. This clamp features a min to max grip range of 0-21mm and a v-groove bearing length of 55mm.

Item No.	Description
RTCLMP1	Clamp Holder, Right Angle



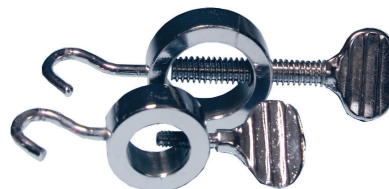
# Metalware Clamps



## C-Clamps

Our clamps feature strong cast iron frames and a screw-thread mechanism that provides a sturdy grip.

Item No.	Description
CLMPC2	C-Clamp, 2" jaw opening
CLMPC3	C-Clamp, 3" jaw opening
CLMPC4	C-Clamp, 4" jaw opening
CLMPC5	C-Clamp, 5" jaw opening
CLMPC6	C-Clamp, 6" jaw opening



## Hook Collar Clamps

Plated steel collar clamps feature thumbscrews and hooks for suspending pulleys, balances, etc. from support rods or crossbars.

Item No.	Description
HKCL01	Hook Collar Clamp, for 1/2" diameter rods
HKCL02	Hook Collar Clamp, for 3/4" diameter rods



TTCL02



TTCL03

## Test Tube Clamps

Self-closing, available in brass wire or steel wire with brass finish.

Item No.	Description
TTCL01	Test Tube Clamp, Brass Wire, With Finger Grips
TTCL02	Test Tube Clamp, Brass Wire, Without Finger Grips
TTCL03	Test Tube Clamp, Steel Wire, Brass Finish, With Finger Grips
TTCL04	Test Tube Clamp, Steel Wire, Brass Finish, Without Finger Grips



## Mohr's Pinchcock Tubing Clamps

Pinchcock tubing clamps are made of zinc-plated steel wire.

Item No.	Description
CLMP01	Mohr's Pinchcock Clamp, for 10mm diameter tubing
CLMP02	Mohr's Pinchcock Clamp, for 13mm diameter tubing
CLMP03	Mohr's Pinchcock Clamp, for 16mm diameter tubing



## Beaker Tongs

Beaker tongs open to 7" and feature strong zinc-plated steel construction with flat riveted joints and vinyl coated sleeves. Tongs can handle beakers from 50ml to 1500ml capacity. Overall length is 9.75".

Item No.	Description
BTSP09	Beaker Tongs



## Screw Compressor Tubing Clamps

Swivel-type tubing clamps are made of zinc-plated steel wire.

Item No.	Description
HSCOP1	Screw Compressor Tubing Clamp, opens to 3/4"
HSCOP2	Screw Compressor Tubing Clamp, opens to 1"



# Metalware Containers



## Economical Bowls, Stainless Steel

Economical bowls are constructed from 204Cu stainless steel for corrosion resistance at a lower cost. Bowls feature a polished mirror surface for easy mixing and cleaning. Can withstand temperatures up to 760°C (1400°F). Meets NSF standards.



Item No.	Capacity (QT)	Diameter (in)	Height (in)
BWE075	0.75	6 1/2	2
BWE150	1.5	7 3/4	2 3/4
BWE300	3	9	4 1/4
BWE400	4	10 11/16	3 1/2
BWE500	5	11 3/4	4
BWE800	8	13 1/2	4 1/2
BWE1300	13	16	5 1/2
BWE1600	16	17 1/2	5 3/4
BWE2000	20	19	6

## Mixing Bowls, Stainless Steel

Mixing bowls are constructed from 304 stainless steel for increased heat resistance. Bowls feature rounded corners, and polished mirror surface for easy mixing and cleaning. Can withstand temperatures up to 800°C (1472°F). Meets NSF standards.



Item No.	Capacity (Qt)	Diameter (in)	Height (in)
BMX075	0.75	6 1/4	2 3/8
BMX150	1.5	7 3/4	3
BMX300	3	9 3/8	4
BMX400	4	10 3/8	4 1/4
BMX500	5	11 3/4	4 1/2
BMX800	8	13 1/4	5 3/8
BMX1300	13	16	6
BMX2000	20	19	6
BMX3000	30	21 5/8	7 7/8

## Crucibles, Nickel

Unibody construction from sheet nickel, polished inside and out. Can withstand temperatures up to 600°C. Covers included.



Item No.	Capacity (ml)	Height (mm)	Top Outside Diameter (mm)	Quantity per pack
NCR015	15	29	32	1
NCR025	25	39	36	1
NCR050	50	47	45	1
NCR100	100	56	57	1

## Utility Tanks with Lid (Stock Pot), Stainless Steel

Utility tanks (stock pots) are constructed from unsealed, medium gauge 304 stainless steel. Exceptional for use with gas, electric, or even induction style stoves. Tank features heat-resistant handles, and encapsulated-aluminum bottom with three layers for even heat distribution and less energy consumption. Cover is included.

Item No.	Capacity (L)	Diameter (cm)	Height (cm)
STKPT06	6	20	19
STKPT11	11	24	24
STKPT17	17	28	28
STKPT26	26	32	32
STKPT37	37	36	36
STKPT50	50	40	40
STKPT71	71	45	45
STKPT98	98	50	50
STKPT169	169	60	60

## Crucibles, Stainless Steel

Unibody construction from Type 304 stainless steel. Can withstand temperatures from -180° to 800°C. Covers included.



Item No.	Capacity (ml)	Height (mm)	Top Outside Diameter (mm)	Quantity per pack
SSR015	15	34	32	1
SSR020	20	34	33	1
SSR025	25	34	36	1
SSR030	30	38	39	1
SSR050	50	48	46	1
SSR100	100	55	57	1



## Crucible Tongs

Tongs have an overall length of 9" and include riveted joints and serrated tips.

Item No.	Description
CTSP09	Crucible Tongs, Plated Steel
CTOS09	Crucible Tongs, Oxidized Steel
CTBR09	Crucible Tongs, Brass
CTSS09	Crucible Tongs, Stainless Steel



# Metalware Scoops and Spatulas



## Spatulas, Stainless Steel

Stainless steel spatulas, available in various styles and sizes.

Item No.	Description	Quantity per pack
SSFB04	Spatula, 4" (10cm) long, one end flat, one end bent	10
SSFB06	Spatula, 6" (15cm) long, one end flat, one end bent	10
SSFB08	Spatula, 8" (20cm) long, one end flat, one end bent	10
SSFF05	Spatula, 5" (12.5cm) long, both ends flat	10
SSFF08	Spatula, 8" (20cm) long, both ends flat	10
SSFT06	Spatula, 6" (15cm) long, one end flat, one end tapered	10



## Spatulas, Stainless Steel, Both Ends Flat

Stainless steel spatulas with both ends flat.

Item No.	Description	Quantity per pack
SSSS04	Spatula, Both Ends Flat, 4" (10cm) long	10
SSSS06	Spatula, Both Ends Flat, 6" (15cm) long	10
SSSS08	Spatula, Both Ends Flat, 8" (20cm) long	10



## Spatulas, Set of 6

Set of six of our most popular spoons and spatulas for the laboratory. Includes one each: SSSW04 (4" blade stainless steel spatula mounted on a hardwood handle), 81301 (6" polypropylene spatula, one end flat, one end spoon), SSFB06 (6" stainless steel spatula, one end bent, one end flat), SSSP06 (6" stainless steel spatula, one end flat, one end spoon), SSSS06 (6" stainless steel spatula, both ends flat), and SSFT06 (6" stainless steel spatula, one end flat, one end tapered).

Item No.	Description
SPATST6	Spatulas, Set of 6



## Spatulas, Stainless Steel, Flat and Spoon

Stainless steel spatulas with one flat end and one spoon end.

Item No.	Description	Quantity per pack
SSSP04	Spatula, One Flat End, One Spoon End, 4" (10cm) long	10
SSSP06	Spatula, One Flat End, One Spoon End, 6" (15cm) long	10
SSSP08	Spatula, One Flat End, One Spoon End, 8" (20cm) long	10



### NEW PRODUCT

## Spatulas, Soft-Grip

Soft, silicone grip provides improved comfort and handling. Blade is constructed of stainless steel with a flexible, rounded end. Handle is manufactured of polypropylene and layered with a silicone grip. Handle dimensions are 4-1/8" L x 1" W x 1/2" H. Latex-free. Autoclavable.

Item No.	Overall Length	Blade Length	Blade Width	Qty per pack
SSSG03	7.25"	3"	3/4"	1
SSSG04	8.25"	4"	3/4"	1
SSSG05	9.25"	5"	3/4"	1
SSSG06	10.25"	6"	1"	1
SSSG08	12.25"	8"	1"	1





# Metalware Scoops and Spatulas



## Micro Spoon, Stainless Steel

Stainless steel micro spoon has an overall length of 23.5cm (9.25"), with one end spoon and one end flat.

Item No.	Description
SSFS09	Micro Spoon, Stainless Steel



## Micro Spoon, Stainless Steel with Plastic Handle

Stainless steel micro spoon has an overall length of 16.5cm (6.5"), with one end round and one end plastic-coated for easy grip.

Item No.	Description
SSPP07	Micro Spoon, Stainless Steel with Plastic Handle



## Micro Spatula, Stainless Steel

Stainless steel micro spatula, 8" (20cm) long, one end flat and one end pointed.

Item No.	Description
SSFT08	Micro Spatula, Stainless Steel



## Spatulas, Stainless Steel with Wooden Handles

Flexible stainless steel blade with rounded end, mounted in a polished wood handle.

Item No.	Description
SSSW03	Spatula with Wooden Handle, 3" Blade
SSSW04	Spatula with Wooden Handle, 4" Blade
SSSW05	Spatula with Wooden Handle, 5" Blade
SSSW06	Spatula with Wooden Handle, 6" Blade
SSSW08	Spatula with Wooden Handle, 8" Blade



SCPLG52



SCPSM05

## Laboratory Scoops with Handles, Stainless Steel

These laboratory scoops are made from high quality stainless steel and are available in two sizes: 5 oz. and 52 oz.

Item No.	Description
SCPSM05	Laboratory Scoop with Handle, Stainless Steel, 5 oz.
SCPLG52	Laboratory Scoop with Handle, Stainless Steel, 52 oz.



## Laboratory Scoop, Stainless Steel

Stainless steel scoop with one pointed end for handling small amounts of chemicals. Length 6-1/2" (16.5cm). Also available with 5" long hardwood handle.

Item No.	Description
LSCSS6	Laboratory Scoop, Stainless Steel
LSHND1	Hardwood Handle for Laboratory Scoop
LSCSET	Laboratory Scoop and Hardwood Handle Set





## Support Stands with Rods, Stamped Steel

Stamped steel bases with black enamel finish. Includes a removable, zinc-plated steel rod. Bases and rods are also available individually.

Item No.	Base Size	Rod Length	Rod Diameter
SSB4X6	4" x 6"	18"	5/16"
SSB5X8	5" x 8"	20"	3/8"
SSB6X9	6" x 9"	24"	1/2"
SSB6X1	6" x 11"	36"	1/2"



## Support Stands with Rods, Cast Iron

Heavy cast iron bases with black enamel finish. Includes a removable zinc-plated steel rod. Bases and rods are also available individually.

Item No.	Base Size	Rod Length	Rod Diameter
SSB4X6-CI	4" x 6"	18"	5/16"
SSB5X8-CI	5" x 8"	20"	3/8"
SSB6X9-CI	6" x 9"	24"	1/2"
SSB6X1-CI	6" x 11"	36"	1/2"



Heavy support stand includes a reinforcing steel plate that provides extra weight.



## Heavy Support Stands with Rods, Stamped Steel

Heavy stamped steel bases with black enamel finish include a steel plate mounted underneath, which makes them about 50% heavier than regular stamped steel bases. The steel plate also facilitates a sturdier threading of the rod into the base.

Includes a removable, zinc-plated steel rod. Bases and rods are also available individually.

Item No.	Base Size	Rod Length	Rod Diameter
SSB4X6-H	4" x 6"	18"	5/16"
SSB5X8-H	5" x 8"	20"	3/8"
SSB6X9-H	6" x 9"	24"	1/2"
SSB6X1-H	6" x 11"	36"	1/2"



## Two-Hole Support Stands with Rods, Stamped Steel

Stamped steel bases with black enamel finish feature two tapped holes. Hole at center of the shorter side is for standard ring stand use. Hole at center of the longer side is for applications such as titrations, specific gravity determinations, etc.

Includes a removable zinc-plated steel rod. Bases and rods are also available individually.

Item No.	Base Size	Rod Length	Rod Diameter
SSB4X6-H2	4" x 6"	18"	5/16"
SSB5X8-H2	5" x 8"	20"	3/8"
SSB6X9-H2	6" x 9"	24"	1/2"
SSB6X1-H2	6" x 11"	36"	1/2"



# Metalware Support Stands



## Triangular Support Stands with Rods, Cast Iron

Heavy cast iron triangular bases with black enamel finish. Includes a removable zinc-plated steel rod.

Item No.	Base Size	Rod Length	Rod Diameter
TSR318	3"	18"	5/16"
TSR420	4"	20"	3/8"
TSR524	5"	24"	1/2"
TSR636	6"	36"	1/2"



## Support Stand and Ring Sets

Each set contains a stamped steel base and a zinc-plated steel rod, along with 2, 3, 4, or 5 cast iron rings with boss head clamps.

Item No.	Base Size	Rod Length	Rod Diameter	Ring Size
SET462	4" x 6"	18"	5/16"	3", 4"
SET583	5" x 8"	20"	3/8"	3", 4", 5"
SET694	6" x 9"	24"	1/2"	3", 4", 5", 6"
SET615	6" x 11"	36"	1/2"	2", 3", 4", 5", 6"



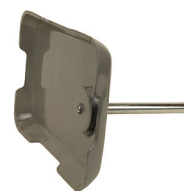
**NEW PRODUCT**

## Deluxe Support Stands with Adjustment Rod, Cast Iron

Cast iron bases with gray enamel finish. The base is 3mm thick with a welded plate on the mounting hole. This gives the support rod 10mm of screw support, which is three times thicker than other traditional stands. The support rod includes an 80mm long rod to provide more torque when securing the rod to the base plate. Includes a removable, zinc-plated steel rod.



80mm adjustment rod provides more torque when securing rod to base



Cast iron base with welded plate provides 10mm of screw support



Easily accessed adjustment rod lets users quickly tighten or loosen the rod in the base

Item No.	Base Size	Rod Length	Rod Diameter
SSB4X6-J	4" x 6"	18"	5/16"
SSB5X8-J	5" x 8"	20"	3/8"
SSB6X9-J	6" x 9"	24"	1/2"
SSB6X1-J	6" x 11"	36"	1/2"



## Support Rings, Cast Iron

Cast iron, zinc-plated support ring with boss head clamp and thumbscrew. Distance from support to center of ring is 4-1/2" for all sizes.

Item No.	Description	Quantity per pack
SRCI02	Cast Iron Support Ring, 2" Diameter	5
SRCI03	Cast Iron Support Ring, 3" Diameter	5
SRCI04	Cast Iron Support Ring, 4" Diameter	5
SRCI05	Cast Iron Support Ring, 5" Diameter	5
SRCI06	Cast Iron Support Ring, 6" Diameter	5
SRCI07	Cast Iron Support Ring, 7" Diameter	5



## Support Rings, Steel Rod

Steel rod, zinc-plated support ring with attached boss head clamp and thumbscrew. Distance from support to center of ring is 4-1/2" for all sizes.

Item No.	Description	Quantity per pack
SRSR02	Steel Rod Support Ring, 2" Diameter	5
SRSR03	Steel Rod Support Ring, 3" Diameter	5
SRSR04	Steel Rod Support Ring, 4" Diameter	5
SRSR05	Steel Rod Support Ring, 5" Diameter	5
SRSR06	Steel Rod Support Ring, 6" Diameter	5
SRSR07	Steel Rod Support Ring, 7" Diameter	5



## Extension Support Rings

Steel rod, zinc-plated extension support rings. Rod diameter 5/16", overall length 12" for all sizes.

Item No.	Ring Diameter	Quantity per pack
SRSE02	Extension Support Ring, 2" Diameter	1
SRSE03	Extension Support Ring, 3" Diameter	1
SRSE04	Extension Support Ring, 4" Diameter	1
SRSE05	Extension Support Ring, 5" Diameter	1
SRSE06	Extension Support Ring, 6" Diameter	1



## A-Base and Rod, Cast Iron

The A-shaped base is made of rugged cast iron and is designed for extra stability. It has 8" long legs with a black enamel finish. The 5" to 7-1/2" opening between the legs is designed for positioning items near the support rod. Includes a removable zinc-plated steel rod that is 24" long and 1/2" in diameter.

Item No.	Description
SBA724	A-Base and Rod, Cast Iron



## Tripod Stands with Concentric Rings, Cast Iron

Removable concentric rings provide an adjustable worksurface for various applications. Available with three or four cast iron rings with black enamel finish. Detachable zinc plated legs are interchangeable for use with various sizes of rings. Rings and legs are also available individually.

Item No.	Ring O.D.	Height
TCR6X9	3.5", 4.75", 6.5"	9"
TCR8X9	3.5", 4.75", 6.5", 8"	9"



## Tripod Stands, Cast Iron

Cast iron ring with black enamel finish. Detachable zinc plated legs are interchangeable for use with various sizes of rings. Rings and legs are also available individually.

Item No.	Ring O.D.	Height
TRS3X6	3.5"	6"
TRS3X9	3.5"	9"
TRS5X8-S	5"	9"
TRS5X8	5"	8"
TRS6X9	6"	9"



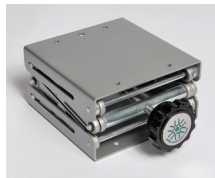
# Metalware Support Stands



## Laboratory Jacks



Scan to view  
demonstration video



LBJK66 closed



LBJK88 closed



LBJK44 closed

Laboratory support jacks are constructed of painted aluminum and stainless steel. The scissor jack design enables height adjustment with a simple turn of the knob.

LBJK44 has a 4" x 4" platform that can be vertically adjusted from a closed position of 2.5" up to 6". Maximum load capacity is 10kg.

LBJK66 has a 6" x 6" platform that can be vertically adjusted from a closed position of 3" up to 10.5". Maximum load capacity is 20kg.

LBJK88 has a 8" x 8" platform that can be vertically adjusted from a closed position of 2.5" up to 11.75". Maximum load capacity is 25kg.

Item No.	Description
LBJK44	Laboratory Jack, 4" x 4" Platform
LBJK66	Laboratory Jack, 6" x 6" Platform
LBJK88	Laboratory Jack, 8" x 8" Platform

## Laboratory Jack with Platform and Rod



Laboratory support jack is constructed of painted aluminum and stainless steel. The scissor jack design enables height adjustment with a simple turn of the knob. Sturdy design can support loads up to 20kg.

Lab jack platform measures 4.5" x 5.5". Platform height can be vertically adjusted from closed position of 2.75" up to 10.5".

Set includes a removable 8" x 8" platform that attaches to the lab jack using the included 18" long, 1/2" diameter support rod.

Item No.	Description
LBJSET	Laboratory Jack with Platform and Rod



LBJK01 closed

## Laboratory Jack

Laboratory support jack is constructed of painted aluminum and stainless steel. The scissor jack design enables height adjustment with a simple turn of the knob. Sturdy design can support loads up to 20kg.

Lab jack platform measures 4.5" x 5.5" and features pre-drilled holes for attaching a support rod. Platform height can be vertically adjusted from closed position of 2.75" up to 10.5".

Item No.	Description
LBJK01	Laboratory Jack





## Lattice Lab System, Set #1



### Setup with foot plates secured to a bench.

Two-dimensional lattices can be assembled in units of 24" x 24" with the crossbars horizontal or vertical. The set allows construction of up to two 24" x 24" sections with one crossbar each.



### Sections can be added at any angle.

This can provide limited stability without securing all of the foot plates to the bench. Add heavy apparatus inside the angle of the sections for stability.



Scan to view  
demonstration video

The Lattice Lab System is a lightweight set of aluminum support rods and clamps that allows a wide range of lab apparatus to be assembled and securely supported. Assembly is easy and requires only a screwdriver. Support rods are made of hard aluminum and foot plates and hook connectors are made of cast alloy.

### Contents:

Foot Plate, 2- $\frac{5}{16}$ " diameter . . . . .	4
Set Screw for Foot Plate . . . . .	4
Anchoring Screw for Foot Plate . . . . .	12
Hook Connector with Thumbscrew . . . . .	22
Support Rod, 2" long, $\frac{1}{2}$ " diameter . . . . .	8
Support Rod, 18" long, $\frac{1}{2}$ " diameter . . . . .	2
Support Rod, 24" long, $\frac{1}{2}$ " diameter . . . . .	8

### Item No.

### Description

LLS001

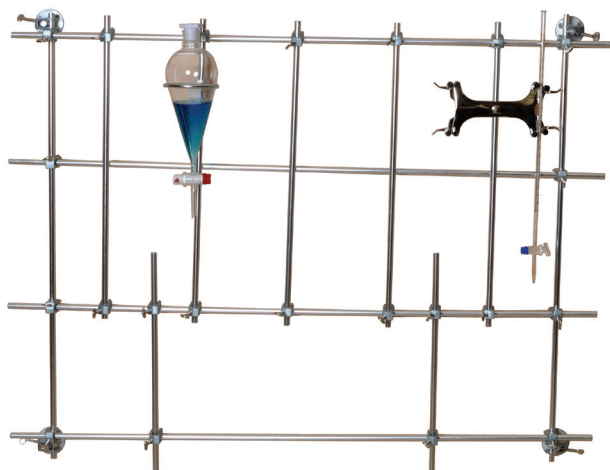
Lattice Lab System, Set #1



### Create a portable 24" x 24" lattice.

Assemble it using the two 18" support rods with 2" support rods and the foot plates to form a secure base. More 2" rods and two 24" rods form a strong angle brace to maintain the lattice upright.

## Lattice Lab System, Set #2



### Five different rod lengths.

Construct a wide variety of lattice structures using this assortment that includes 2", 18", 24", 36" and 48" long rods.

This Lattice Lab System features an assortment of aluminum rods from 18" to 48" long. Assembly is easy and requires only a screwdriver. Support rods are made of hard aluminum and foot plates and hook connectors are made of cast alloy.

### Contents:

Foot Plate, 2- $\frac{5}{16}$ " diameter . . . . .	4
Set Screw for Foot Plate . . . . .	4
Anchoring Screw for Foot Plate . . . . .	12
Hook Connector with Thumbscrew . . . . .	26
Support Rod, 2" long, $\frac{1}{2}$ " diameter . . . . .	8
Support Rod, 18" long, $\frac{1}{2}$ " diameter . . . . .	2
Support Rod, 24" long, $\frac{1}{2}$ " diameter . . . . .	5
Support Rod, 36" long, $\frac{1}{2}$ " diameter . . . . .	2
Support Rod, 48" long, $\frac{1}{2}$ " diameter . . . . .	4

### Item No.

### Description

LLS002

Lattice Lab System, Set #2



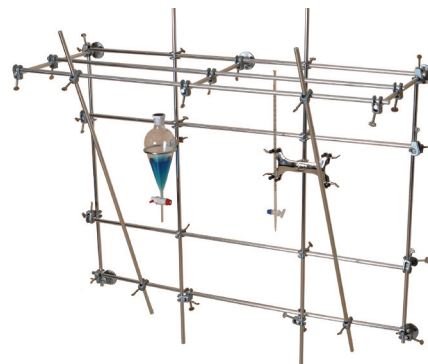


## Lattice Lab System, Set #3

This Lattice Lab System features an assortment of aluminum rods, including 10 rods that are 48" long. Assembly is easy and requires only a screwdriver. Support rods are made of hard aluminum and foot plates and hook connectors are made of cast alloy.

### Contents:

Foot Plate, 2-5/16" diameter	6
Set Screw for Foot Plate	6
Anchoring Screw for Foot Plate	18
Hook Connector with Thumbscrew	42
Support Rod, 2" long, 1/2" diameter	10
Support Rod, 18" long, 1/2" diameter	3
Support Rod, 36" long, 1/2" diameter	2
Support Rod, 48" long, 1/2" diameter	10

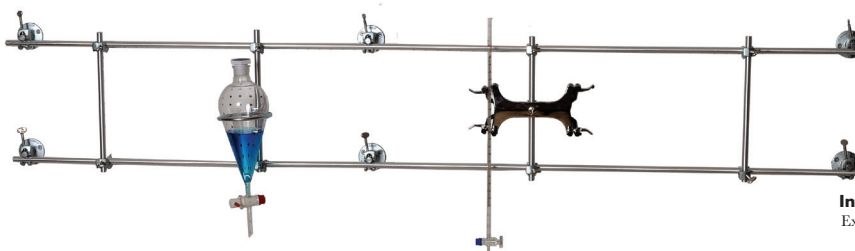


### Includes 10 rods of 48" length.

This set features a large quantity of 48" rods for use in labs that require a large setup.

Item No.	Description
LLS003	Lattice Lab System, Set #3

## Lattice Lab System, Set #4



### Includes rods up to 72" long.

Extra-long 72" rods can be positioned horizontally or vertically.

This Lattice Lab System set features aluminum rods up to 72" long. Assembly is easy and requires only a screwdriver. Support rods are made of hard aluminum and foot plates and hook connectors are made of cast alloy.

### Contents:

Foot Plate, 2-5/16" diameter	8
Set Screw for Foot Plate	8
Anchoring Screw for Foot Plate	24
Hook Connector with Thumbscrew	49
Support Rod, 2" long, 1/2" diameter	6
Support Rod, 12" long, 1/2" diameter	6
Support Rod, 24" long, 1/2" diameter	2
Support Rod, 48" long, 1/2" diameter	7
Support Rod, 72" long, 1/2" diameter	5

Item No.	Description
LLS004	Lattice Lab System, Set #4

## Lattice Lab Rod Connector



This aluminum connector is used to attach two aluminum rods together. 12.9mm inner diameter. Includes two set screws and an Allen key.

Item No.	Description
LLSRC2	Lattice Lab Rod Connector

## Lattice Lab Accessories

Components from Lattice Lab Sets are available individually so sets can be expanded to accommodate customized needs.

Item No.	Description
LLSCLMP	Hook Connector, Aluminum
LLSFPS	Foot Plate
LLSR02	Aluminum Rod, 2" long
LLSR24	Aluminum Rod, 24" long
LLSR36	Aluminum Rod, 36" long
LLSR48	Aluminum Rod, 48" long
LLSR72	Aluminum Rod, 72" long



Hook Connector connects two 1/2" diameter support rods at right angles with a single thumbscrew.



Set screw fits into foot plates to secure support rods.



Foot plates accept 1/2" diameter support rods. Three 3/16" countersunk holes allow the foot plate to be secured to a bench.



# Metalware Support Stands



## Two-Way Burner Stand

This stand is ideal for use with alcohol burners. The base is made from 3/16" stainless steel rod, with a plated steel mesh top. The stand can be used in either high (5") or low (4") position.

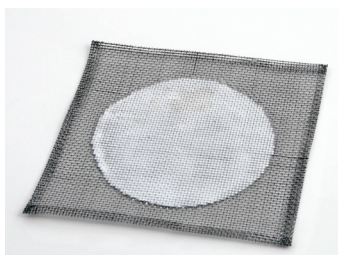
Item No.	Description
ABHL01	Two-Way Burner Stand



## Alcohol Burner Stand

Made of steel wire, zinc plated. Stand has a heavy wire gauze top. Overall height is 5", to accommodate all sizes of burners. Also available with a ceramic center on wire gauze top.

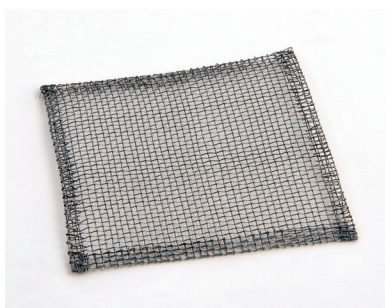
Item No.	Description
ABSP05	Alcohol Burner Stand
ABSC05	Alcohol Burner Stand, with Ceramic Center



## Wire Gauze with Ceramic Center

Iron wire gauze (24 SWG/10 Mesh) with ceramic coating at the center and folded edges. Contains no asbestos. Sold as packs of 10.

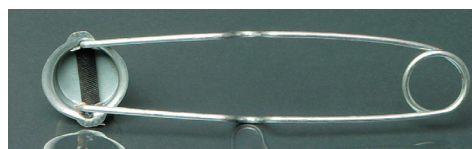
Item No.	Description	Quantity per pack
WGCC44	Wire Gauze with Ceramic Center, 4" x 4"	10
WGCC55	Wire Gauze with Ceramic Center, 5" x 5"	10
WGCC66	Wire Gauze with Ceramic Center, 6" x 6"	10



## Wire Gauze, Plain

Iron wire gauze (24 SWG/10 Mesh) with folded edges. Sold as packs of 10.

Item No.	Description	Quantity per pack
WGPL44	Wire Gauze, Plain, 4" x 4"	10
WGPL55	Wire Gauze, Plain, 5" x 5"	10
WGPL66	Wire Gauze, Plain, 6" x 6"	10



GSLT01



GSFLT1-PK/5

## Gas Lighter

Hooded lighter is safe, and economical. The hood traps gas, and protects the lighting file. Replacement flints are also available.

Item No.	Description
GSLT01	Gas Lighter
GSFLT1-PK/5	Replacement flints, pack of 5



## Clay Pipe Triangles

Good quality clay pipe mounted on heavy gauge twisted galvanized steel wire.

Item No.	Description
CPT015	Clay Pipe Triangle, 1.5" side length
CPT020	Clay Pipe Triangle, 2.0" side length
CPT025	Clay Pipe Triangle, 2.5" side length
CPT030	Clay Pipe Triangle, 3.0" side length



# Metalware Tools



## Laboratory Tools Kit

An assortment of six of the most commonly used laboratory tools, available as one convenient set. Contains one each of following: test tube brush, spatula, crucible tongs, test tube clamp, lab scoop, and forceps.

Item No.	Description
LSET6	Laboratory Tools Kit



## Test Tube Brushes, Natural Bristles

Good quality natural bristles mounted in twisted heavy gauge galvanized wire. All brushes feature a radial top.

Additional sizes are available. Please call for details.

Item No.	Brush Length	Brush Diameter	Overall Length	Quantity per pack
TTBN01	3"	1/2"	8"	12
TTBN02	3"	3/4"	8"	12
TTBN03	3"	1"	9"	12
TTBN04	4"	1-1/2"	11"	12

## Forceps, Stainless Steel



## Cylinder and Bottle Brush, Nylon Bristles

Designed for cleaning cylinders, bottles, and large test tubes. Features nylon bristles with a radial top mounted in twisted heavy gauge galvanized wire.

Item No.	Brush Length	Brush Diameter	Overall Length	Quantity per pack
CYBR20	7"	2.5"	20"	1



## Test Tube Brushes, Nylon Bristles

Good quality nylon bristles mounted in twisted heavy gauge galvanized wire. All brushes feature a radial top.

Additional sizes are available. Please call for details.

Item No.	Brush Length	Brush Diameter	Overall Length	Quantity per pack
TTBRB1	3"	1/2"	8"	12
TTBRB2	3"	3/4"	8"	12
TTBRB3	3"	1"	9"	12
TTBRB4	4"	1-1/2"	11"	12

Good quality stainless steel forceps for general use in the laboratory. All feature serrated tips. Non-sterile, autoclavable.

Item No.	Description
FRSS14	Stainless Steel Forceps, Blunt, 5"
FOBL05	Stainless Steel Forceps, Economy Blunt, 5"
FOBLC5	Stainless Steel Forceps, Angular Blunt, 5"
FOMF05	Stainless Steel Forceps, Sharp, 5"
FOBL45	Stainless Steel Forceps, Economy Blunt, 4.5"



[www.unitedsci.com](http://www.unitedsci.com)

**United Scientific Supplies, Inc.**

3055 N. Oak Grove Ave. P: +1 847-336-7556  
Waukegan IL 60087 F: +1 847-336-7571  
[www.unitedsci.com](http://www.unitedsci.com) E: [info@unitedsci.com](mailto:info@unitedsci.com)